

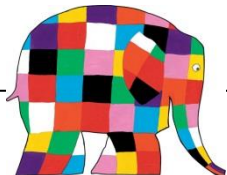


### Week 1

Settling in (children part-time)  
Pegs and trays  
Inside/outside - introduce visual timetable  
Introduce colour groups  
Tour of the school

### Week 3

Baseline assessment continued  
Elmer  
Colour and pattern focus  
Story sack and small world - acting out the story



# Beaumont Primary Medium Term Plan Reception Autumn 1



# I am special!

### Week 6

Baseline assessment continued  
The Rainbow Fish

PSE focus - being a good friend

### Week 2

#### Begin Baseline assessments

All about faces - Shape people, paper plate faces, birthday focus (candles and ages)

Bill the Bear's birthday!



### Week 4

#### Baseline assessments continued

Goldilocks and the three bears  
Sizes - big, middle-sized and small

Cutting skills - puppets  
Story sacks and porridge dough



## Week 5

Baseline assessment continued  
Super senses week (UTW focus)  
Exploring the five senses using activities  
from the EYFS science box.



## Week 7 My body and My family

Physical focus - my amazing body  
People and community focus - my  
family

UTW focus - growing and changing

